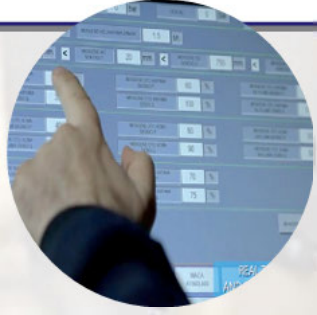


## Makine Özellikleri Machine Specifications

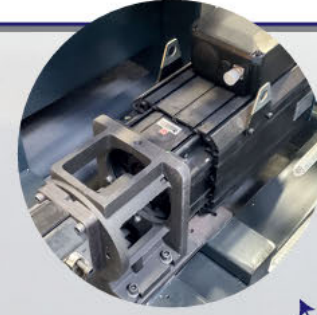
- PLC DOKUNMATİK EKRANLI 10" (\*15", \*21") ELEKTRONİK KONTROL - SHOT VISION\*
- PLC OR INDUSTRIAL PC CONTOL WITH 10" to 21" TOUCHSCREENS - SHOT VISION\*



- L TİPİ MİNİMALİST VE BAĞIMSIZ KAPAK TASARIMI İLE HIZLI ÇEVİRİM VE KOLAY KALIP YÜKLEME
- L SHAPED STANDALONE DOOR - MINIMALIST DESIGN - FAST CYCLE TIME & EASY MOLD INSTALLATION



- SERVO MOTOR: DÜŞÜK ENERJİ TÜKETİMİ, SESSİZ, HASSAS KONTROL\*
- FULL SERVO SYSTEM: COST SAVING, LOW NOISE, PRECISE CONTROL\*



- GELİŞMİŞ 3 FAZLI ENJEKSİYON SİSTEMİ (LAZER POZİSYONLAMA İLE HIZ VE BASINÇ KONTROLÜ)
- ADVANCED 3 PHASE INJECTION SYSTEM (TOUCH SCREEN SPEED & PRESSURE CONTROL WITH LASER POSITIONING)



- TEKNİK DESTEK & GÜNCELLEME İÇİN UZAKTAN BAĞLANTI
- REMOTE CONNECTION FOR DIAGNOSIS & SUPPORT



- BASINÇ FİLTRESİ 10-25 MİKRON YAĞ TEMİZLİĞİ
- PRESSURE FILTERS (10-25 MICRON - BETA 1000)



- OTOMASYON ROBOTLARINA HAZIR SİSTEM (KEPÇE, YAĞLAMA, PARÇA ALMA)
- PLUG & PLAY READY FOR AUTOMATION ROBOTS (LADLE, SPRAYER, EXTRACTOR)



- TASARRUFLU DEĞİŞKEN DEBİLİ PİSTONLU POMPA İLE ORANSAL KONTROLLÜ ENJEKSİYON SİSTEMİ
- LOW-COST SOLUTION - ENERGY EFFICIENT VARIABLE PISTON PUMP & PROPORTIONAL SPEED CONTROL